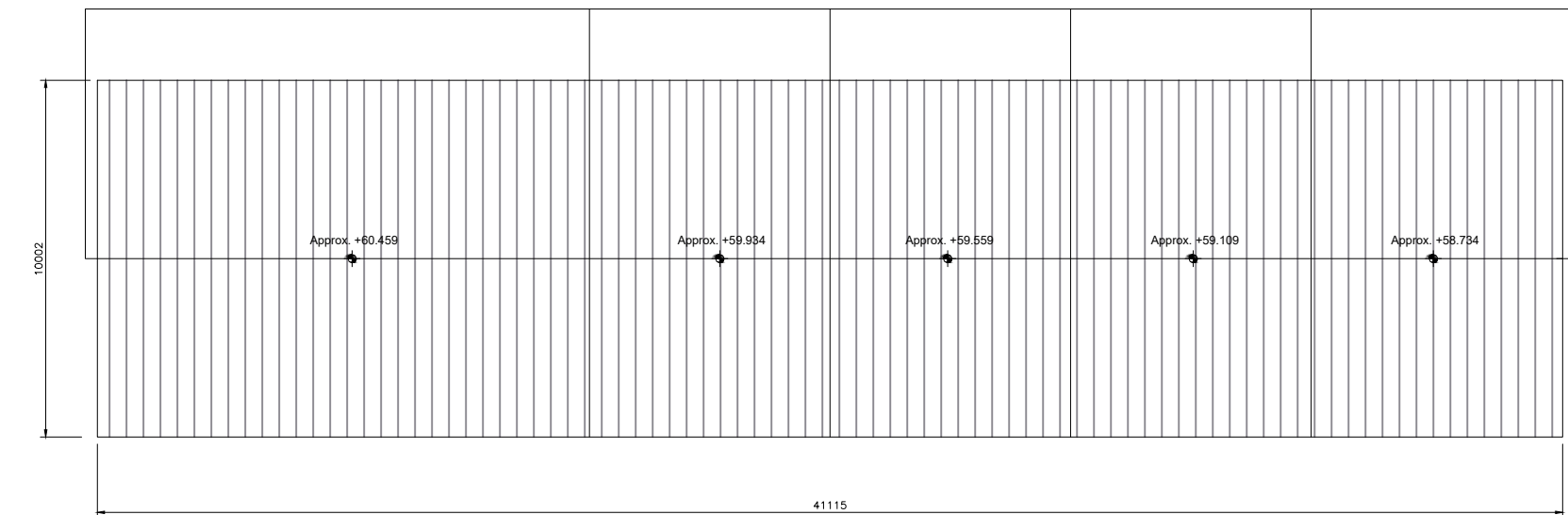




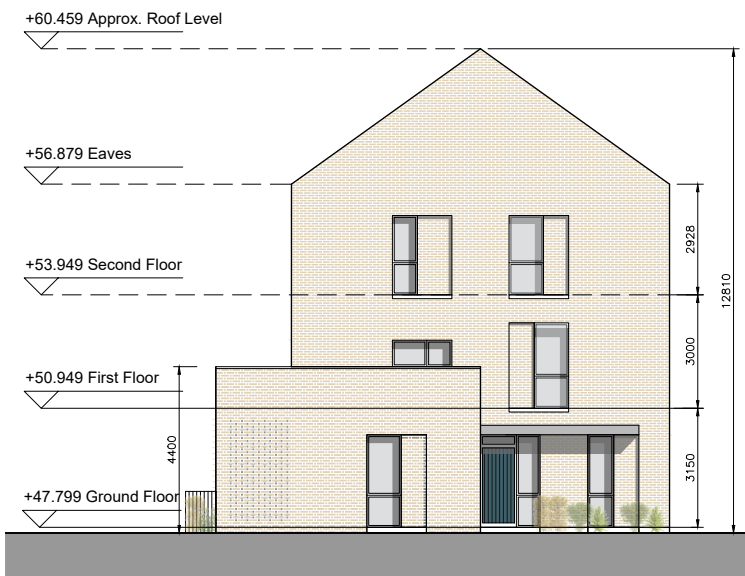
DUPLEX BLOCK O  
FRONT ELEVATION



DUPLEX BLOCK O  
REAR ELEVATION



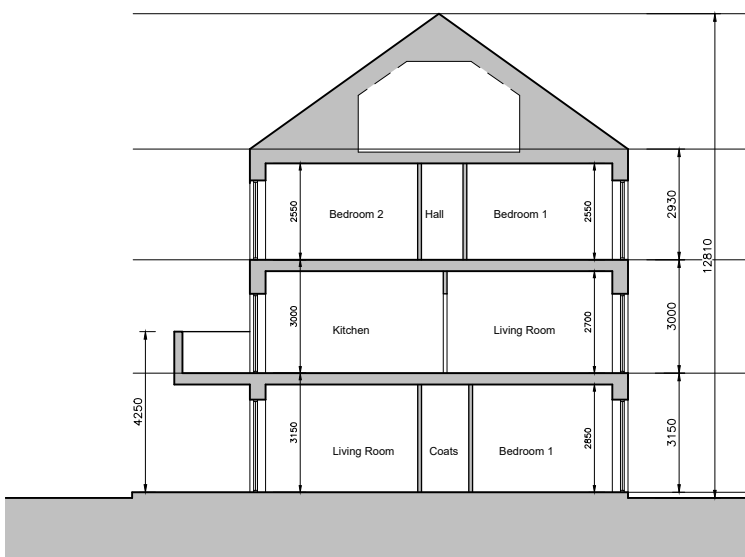
DUPLEX BLOCK O  
ROOF PLAN



DUPLEX BLOCK O  
SIDE ELEVATION (SOUTH)



DUPLEX BLOCK O  
SIDE ELEVATION (NORTH)



DUPLEX BLOCK O  
SECTION AA

Unit Type

- 3 Bed Duplex - 5 Person
- 2 Bed Apartment - 4 Person
- 1 Bed Apartment - 2 Person

Block	1 Beds	2 Beds	3 Beds	Total Units
O	4	1	6	11

- © This drawing is copyright.
- 1 Do not scale this drawing.
  - 2 Errors and omissions to be immediately notified to Architect.
  - 3 All dimensions to be checked on site.
  - 4 To be read with relevant Engineers drawings.

Note on Internal Floor Plans  
All noted room areas are gross.  
The proposed areas and aggregate areas comply with Sustainable Urban Housing: Design Standards for New Apartments Guidelines for Planning Authorities. (December 2020)

Where bedroom areas are noted they are exclusive of any built-in storage space.

Storage is generally provided off the hallway or kitchen, and is not provided within a bedroom. Furniture, fittings and fixtures shown on the plans are indicative.

External Finishes:

Roof:  
Slate or clay/concrete tiles with solar thermal or photovoltaic panels subject to orientation and detailed design

Walls:  
Selected facing brick with render where indicated on drawings with precast / stone capping or pressed metal capping to parapets

Cladding to Upper Level:  
Dark metal / Dark fibre cement boarding where indicated on drawings.

Louvres:  
Proprietary metal louvred doors with colour to match windows/doors where indicated on drawings.

Windows:  
Aluminium framed window system

Gutters/downpipes:  
uPVC or aluminium

Balconies:  
Projecting: Toughened glazing & stainless steel handrails on precast concrete or metal frame galvanized steel base and guarding/ railing.

Entrance Canopy:  
Pressed or standing seam metal on Timber framing

revisions date inis

description	drawing no.
Duplex Block O	1830-SHD-D-15-301
Roof Plan, Section & Elevations	rev'n.
job	scale
Development at Mooretown - Swords Phase 3	1:200 A2
	date
	APL '22
	drawn
	MN
	checked
	PG

client  
Gerard Gannon Properties

issue  
Planning  
SHD Stage 3

CONROY CROWE KELLY  
ARCHITECTS  
65 MERRION SQUARE  
DUBLIN 2  
PHONE 6613990\1 FAX 6765715  
e-mail info@ckk.ie